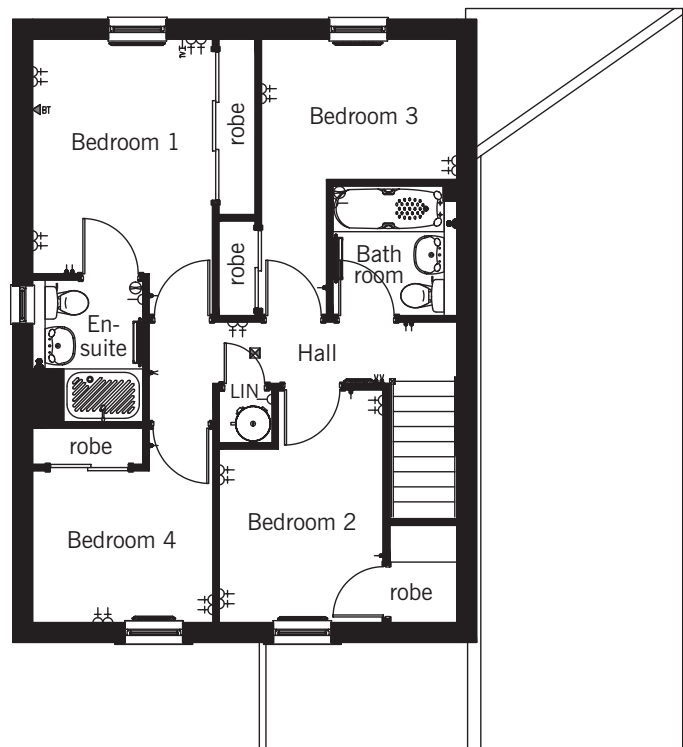
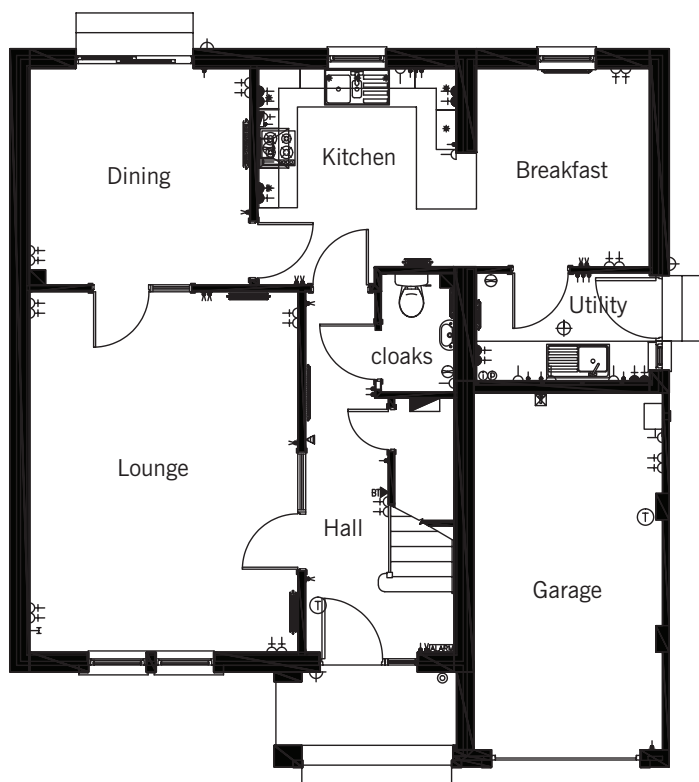


# Jura

4 bedroom detached villa with garage



## Ground Floor

	Metric	Imperial
Lounge	4.05m x 5.45m	13'4" x 17'11"
Dining	3.33m x 3.27m	10'11" x 10'9"
Kitchen	2.98m x 3.27m	9'9" x 10'9"
Utility	2.62m x 1.83m	8'7" x 5'4"
Breakfast	2.62m x 3.00m	8'7" x 9'10"
Toilet	1.10m x 1.79m	3'7" x 5'10"
Garage	2.86m x 5.40m	9'4" x 17'9"

## First Floor

	Metric	Imperial
Bedroom 1	2.72m x 3.55m	8'11" x 11'8"
Bedroom 2	2.48m x 3.52m	8'2" x 11'7"
Bedroom 3	2.96m x 2.13m	9'8" x 7'0"
Bedroom 4	2.73m x 2.30m	8'11" x 7'7"
Bathroom	1.88m x 1.96m	6'2" x 6'5"
En Suite	1.67m x 2.13m	5'6" x 7'0"

The details contained in this brochure have been prepared for the convenience of intending purchasers. The information is for guidance only. The Company reserves the right to amend or vary specification. Nothing in this brochure shall constitute or form any part of a contract. All photographs and illustrations on this insert are for illustrative purposes only.