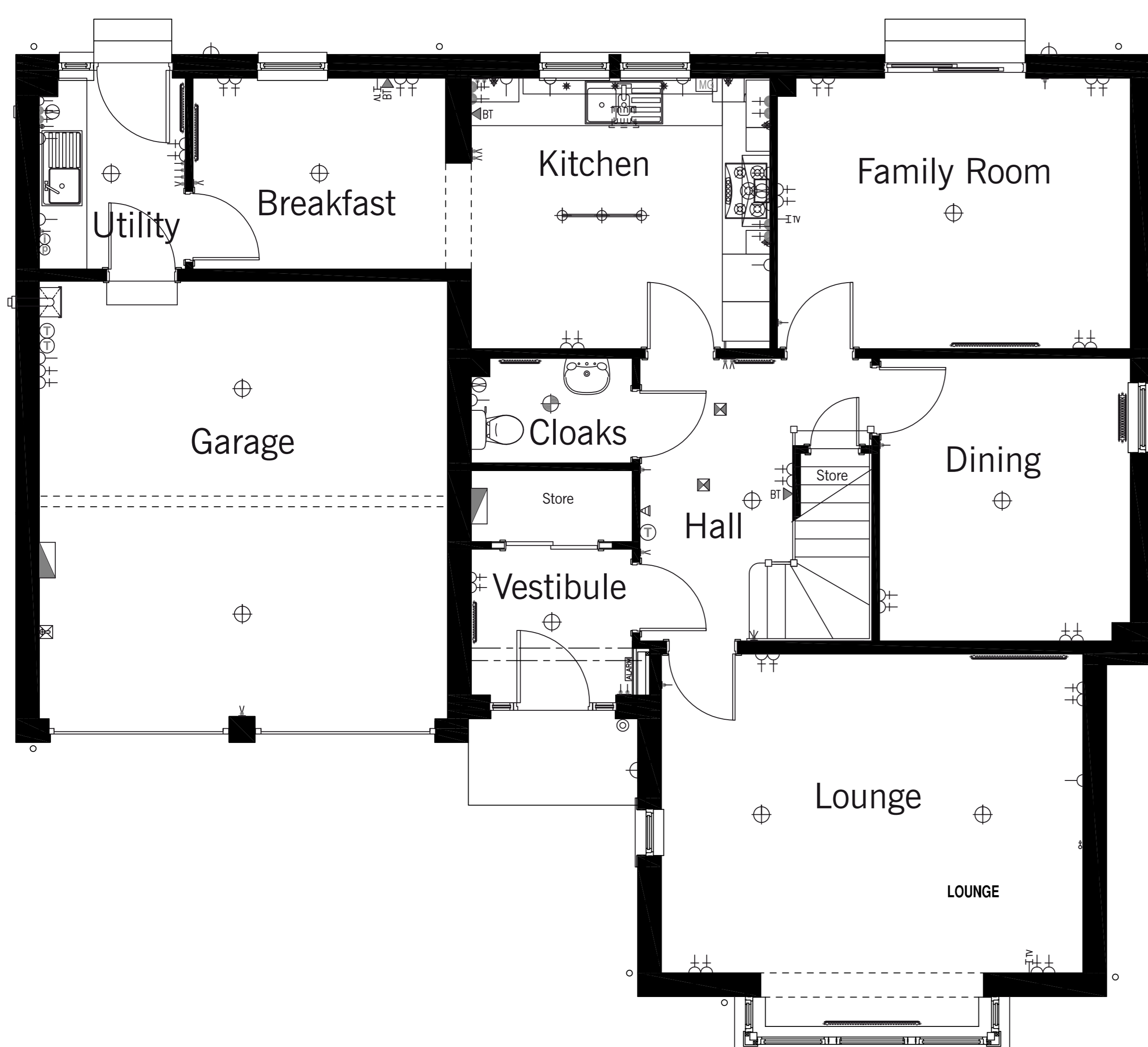


Strathmore

5 bedroom detached villa with double garage



Ground Floor	Metric	Imperial
Lounge	5.38m x 4.06m	17'8" x 13'4"
Family	4.49m x 3.44m	14'9" x 11'3"
Dining	3.30m x 3.44m	10'10" x 11'10"
Kitchen	3.80m x 3.44m	12'6" x 11'3"
Utility	1.87m x 2.47m	6'2" x 8'1"
Breakfast	3.19m x 2.27m	10'6" x 8'1"
Toilet	2.06m x 1.50m	6'9" x 4'1"
Garage	5.19m x 5.57m	17'0" x 18'3"

First Floor	Metric	Imperial
Bedroom 1	5.15m x 3.96m	16'11" x 13'0"
Bedroom 2	4.69m x 3.38m	15'5" x 11'1"
Bedroom 3	3.59m x 3.20m	11'9" x 10'6"
Bedroom 4	3.30m x 3.40m	10'10" x 11'2"
Bedroom 5	2.98m x 2.53m	9'9" x 8'4"
Dressing	1.86m x 2.25m	6'1" x 7'5"
Bathroom	2.25m x 2.10m	7'5" x 6'11"
En suite 1	2.50m x 2.03m	8'2" x 6'8"
En suite 2	2.03m x 1.55m	6'8" x 5'1"

The details contained in this brochure have been prepared for the convenience of intending purchasers. The information is for guidance only. The Company reserves the right to amend or vary specification. Nothing in this brochure shall constitute or form any part of a contract. All photographs and illustrations on this insert are for illustrative purposes only.