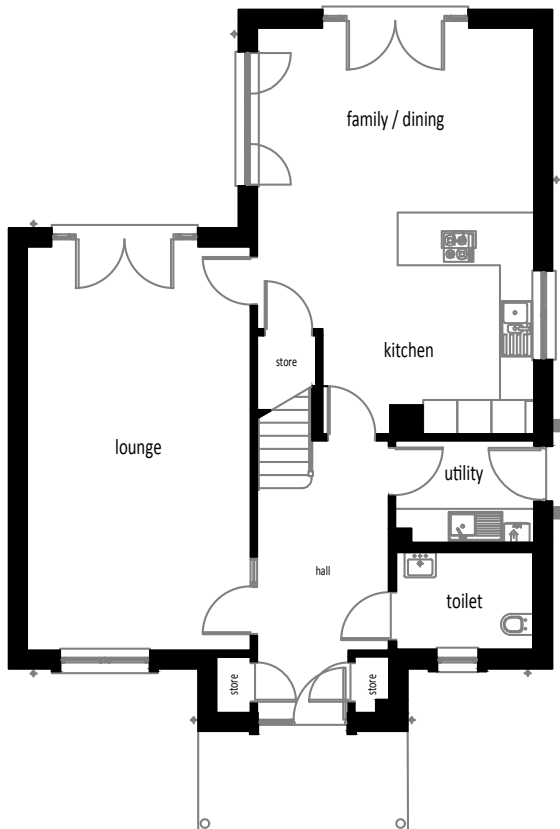


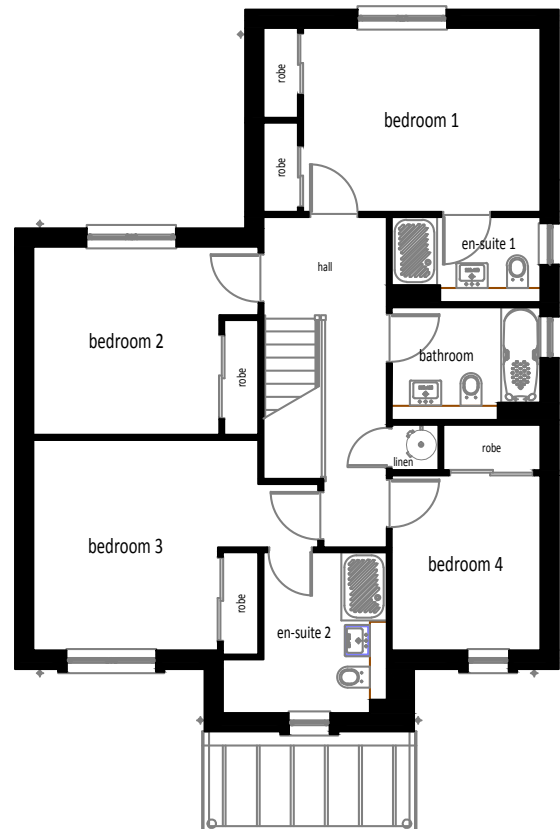
Nairn 15

4 bedroom detached home

Ground Floor



First Floor



Ground Floor

Lounge	3.94m x 7.11m	12'11" x 23'4"
Family/Dining	4.88m x 3.25m	16'0" x 10'8"
Kitchen	3.72m x 3.90m	12'3" x 12'10"
Utility	2.44m x 1.80m	8'0" x 5'11"
Toilet	2.41m x 1.71m	7'11" x 5'7"

First Floor

Bedroom 1	4.18m x 3.24m	13'9" x 10'8"
En Suite 1	2.62m x 1.50m	8'7" x 4'11"
Bedroom 2	3.96m x 3.32m	13'0" x 10'11"
Bedroom 3	3.96m x 3.71m	13'0" x 12'2"
En Suite 2	2.17m x 2.83m	7'1" x 9'3"
Bedroom 4	2.62m x 3.09m	8'7" x 10'2"
Bathroom	2.62m x 1.99m	8'7" x 6'6"

The details contained on this floor plan has been prepared for the convenience of intending purchasers. The information is for guidance only. The Company reserves the right to amend or vary specification. Nothing in this brochure shall constitute or form any part of a contract.

All photographs and illustrations on this insert are for illustrative purposes only. Muir Homes, April 2018.