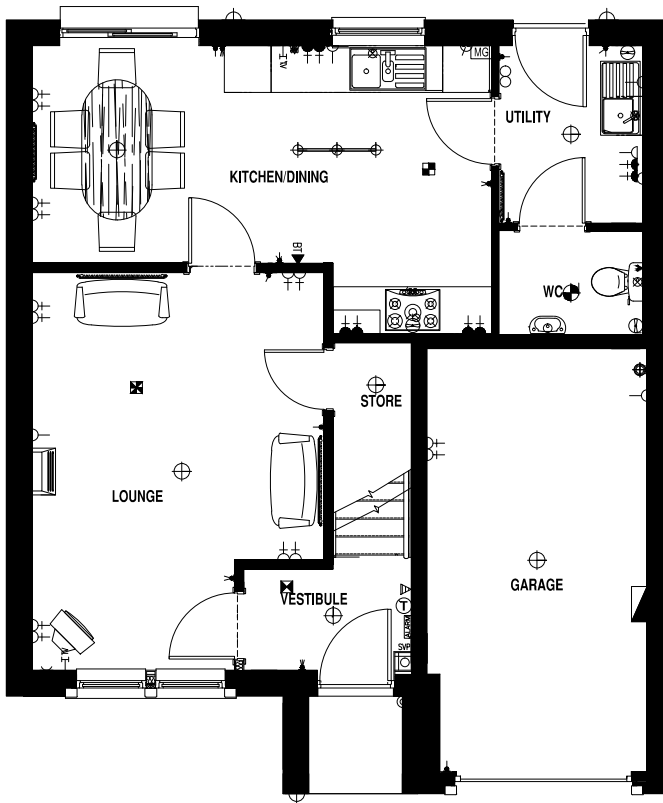


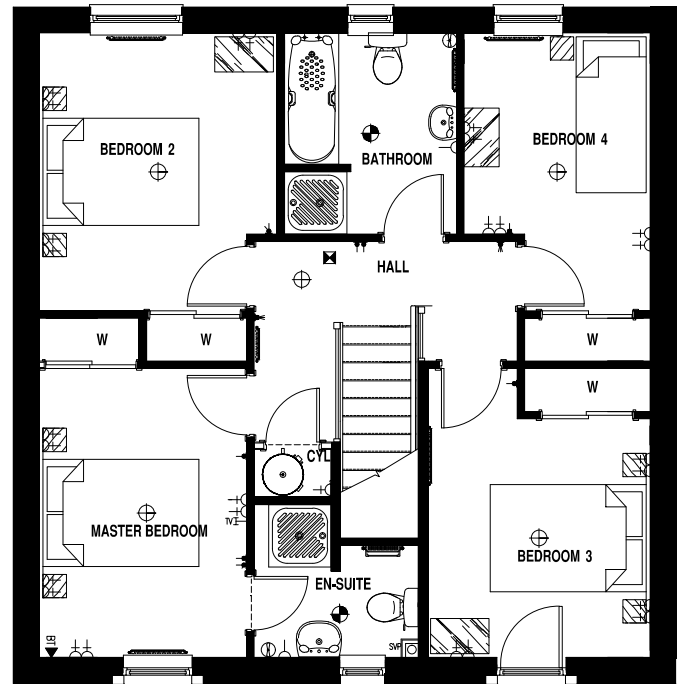
# The Culzean

4-bedroom detached villa with garage

**Ground Floor**



**First Floor**



**Ground Floor**

Lounge	5.01m x 3.74m	16'9" x 12'3"
Kitchen/Dining	2.79m x 5.90m	9'2" x 19'4"
Utility	2.28m x 1.84m	7'6" x 6'1"
WC	1.32m x 1.84m	4'4" x 6'1"
Garage	5.42m x 2.82m	17'10" x 9'3"

**First Floor**

Master Bedroom	3.71m x 2.66m	12'2" x 8'9"
En Suite	1.44m x 2.10m	4'9" x 6'11"
Bedroom 2	3.57m x 3.05m	11'8" x 10"
Bedroom 3	3.06m x 2.85m	10" x 9'4"
Bedroom 4	3.57m x 2.39m	11'8" x 7'10"
Bathroom	2.58m x 2.21m	8'6" x 7'3"

The details contained on this floor plan has been prepared for the convenience of intending purchasers. The information is for guidance only. The Company reserves the right to amend or vary specification. Nothing in this brochure shall constitute or form any part of a contract.

All photographs and illustrations on this insert are for illustrative purposes only. Muir Homes, May 2017.