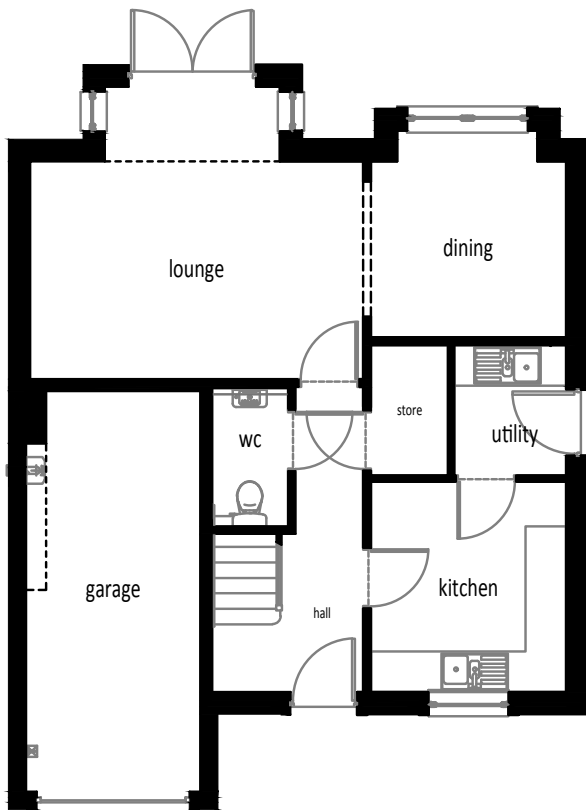


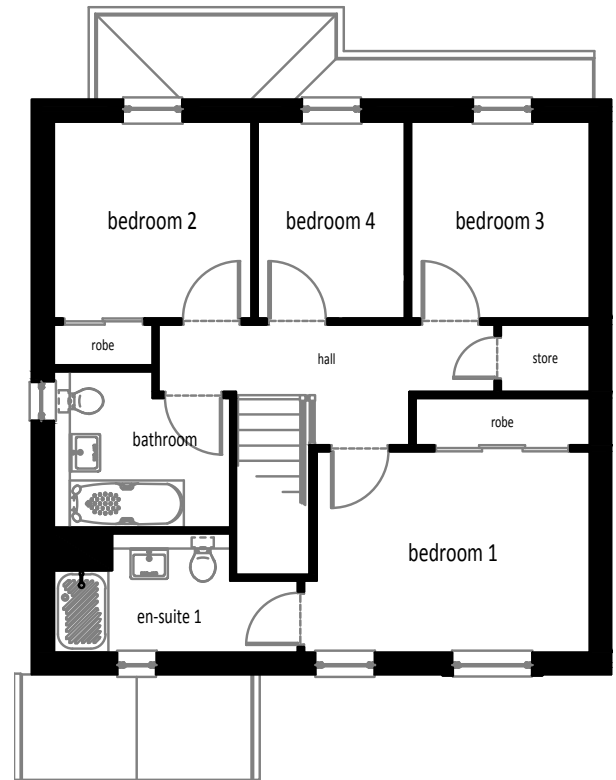
Wemyss 17

4 bedroom detached villa

Ground Floor



First Floor



Ground Floor

Lounge (excluding bay)	4.91m x 3.21m	16'1" x 10'6"
Dining	2.88m x 3.05m	9'5" x 10'0"
Kitchen	2.88m x 3.10m	9'5" x 10'2"
Utility	1.65m x 1.93m	5'5" x 6'4"
WC	1.12m x 2.04m	3'8" x 6'8"
Garage	2.57m x 5.91m	8'5" x 19'5"

First Floor

Bedroom 1	4.03m x 2.97m	13'3" x 9'9"
En Suite 1	2.59m x 1.75m	8'6" x 5'9"
Bedroom 2	2.92m x 2.90m	9'7" x 9'6"
Bedroom 3	2.64m x 2.90m	8'8" x 9'6"
Bedroom 4	2.17m x 2.90m	7'1" x 9'6"
Bathroom	2.60m x 2.30m	8'6" x 7'7"

The details contained on this floor plan has been prepared for the convenience of intending purchasers. The information is for guidance only. The Company reserves the right to amend or vary specification. Nothing in this brochure shall constitute or form any part of a contract.

All photographs and illustrations on this insert are for illustrative purposes only. Muir Homes, April 2018.