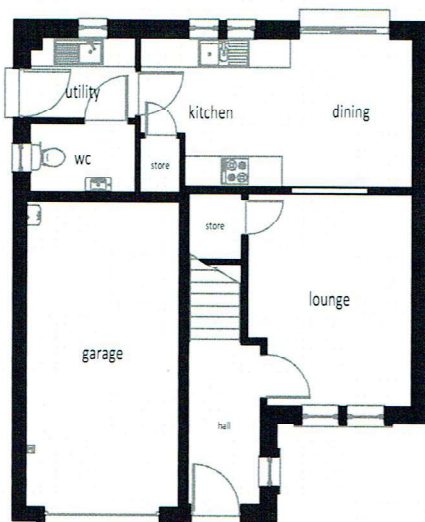


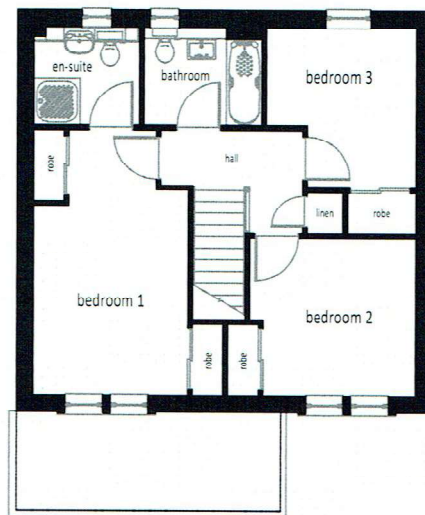
CHEVIOT '17'



FRONT ELEVATION



GROUND FLOOR



FIRST FLOOR

ACCOMMODATION SCHEDULE - Cheviot 17

| | | | | | |
|-------------------------|---------------|-----------------|------------------|---------------|-----------------|
| LOUNGE | 3.22 x 4.17 m | 10' 7" x 13' 6" | BEDROOM 1 | 3.04 x 5.20 m | 10' 0" x 17' 1" |
| KITCHEN / DINING | 5.34 x 2.93 m | 17' 6" x 9' 7" | BEDROOM 2 | 3.26 x 3.08 m | 10' 8" x 10' 1" |
| UTILITY | 2.07 x 1.61 m | 6' 9" x 5' 3" | BEDROOM 3 | 2.94 x 3.15 m | 9' 8" x 10' 4" |
| WC | 1.79 x 1.32 m | 5' 11" x 4' 4" | BATHROOM | 2.31 x 1.93 m | 7' 7" x 6' 4" |
| GARAGE | 3.00 x 6.00 m | 9' 10" x 19' 8" | EN-SUITE | 2.07 x 1.93 m | 6' 9" x 6' 4" |

Muir™
HOMES

Drawing No. 1308-81 Revision Dated 09.04.18

This house type is built in a number of finishes which vary from development to development and plot to plot. Muir Homes maintain a policy of continuous assessment and improvement therefore specifications are subject to modification. Our illustrations have been produced to give you a guide as to appearance and layout. These particulars do not form the basis of any contract.