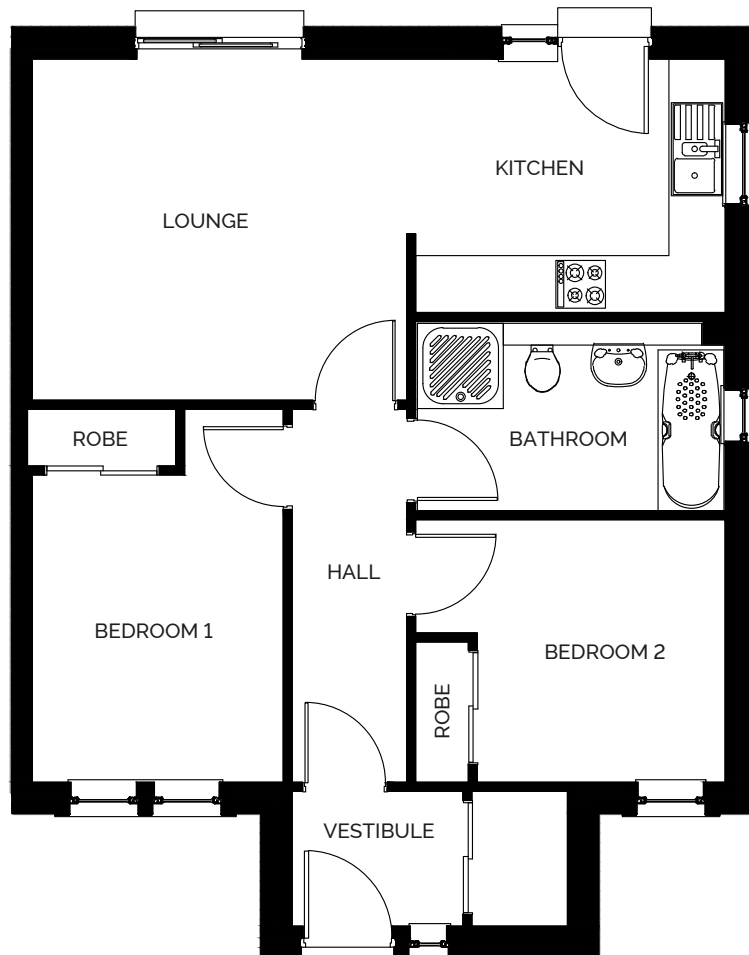


# Fraser

2-bedroom semi-detached bungalow



## Ground Floor

Lounge	3.93m x 3.58m	12'11" x 11'9"
Kitchen	3.25m x 2.66m	10'8" x 8'9"
Vestibule	1.79m x 1.41m	5'10" x 4'8"
Bedroom 1	2.63m x 3.22m	8'8" x 10'7"
Bedroom 2	2.60m x 2.76m	8'6" x 6'1"
Bathroom	3.25m x 1.98m	10'8" x 6'6"

The details contained on this floor plan has been prepared for the convenience of intending purchasers. The information is for guidance only. The Company reserves the right to amend or vary specification. Nothing in this brochure shall constitute or form any part of a contract.

All photographs and illustrations on this insert are for illustrative purposes only. Muir Homes, April 2018.

**Muir**  
HOMES