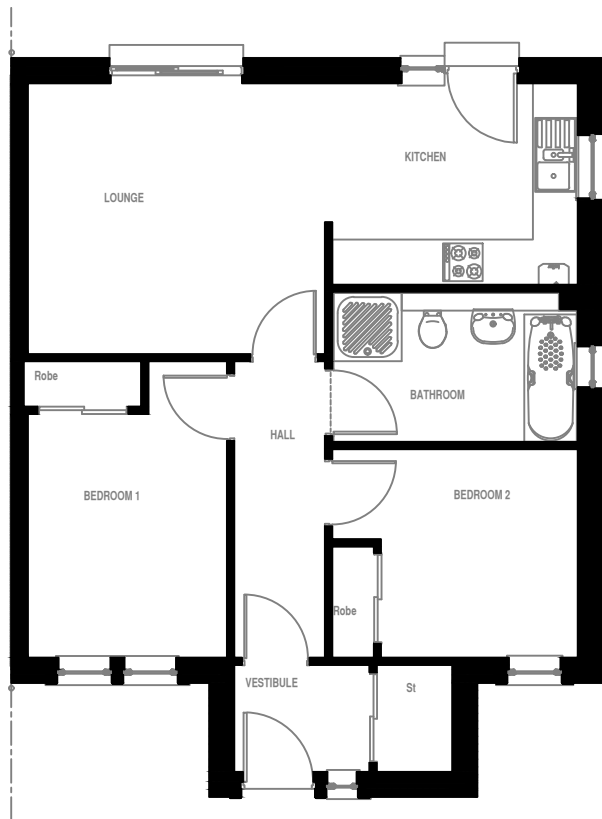


FRASER 15



FRONT ELEVATION



GROUND FLOOR

LOUNGE	3.93 x 3.58 m	12' 11" x 11' 9"
KITCHEN	3.25 x 2.66 m	10' 8" x 8' 9"
BEDROOM 1	2.63 x 3.22 m	8' 8" x 10' 7"
BEDROOM 2	2.60 x 2.76 m	8' 6" x 9' 1"
BATHROOM	3.25 x 1.98 m	10' 7" x 6' 6"

MuirTM
HOMES

Drawing No.1309—Bro01 Revision – Dated 26.04.18

This house type is built in a number of finishes which vary from development to development and plot to plot. Muir Homes maintain a policy of continuous assessment and improvement therefore specifications are subject to modification. Our illustrations have been produced to give you a guide as to appearance and layout. These particulars do not form the basis of any contract.