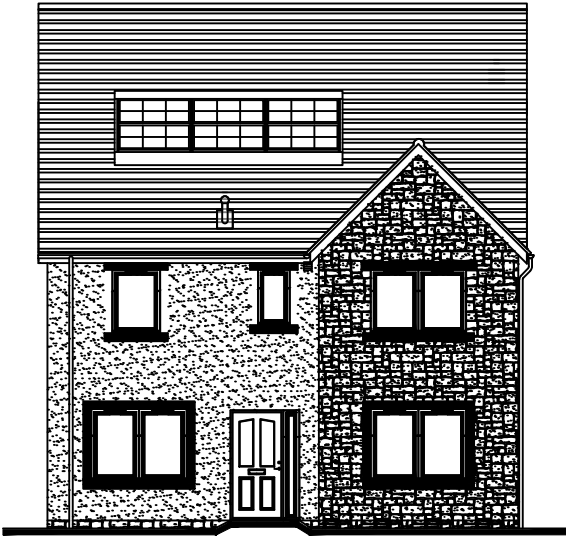
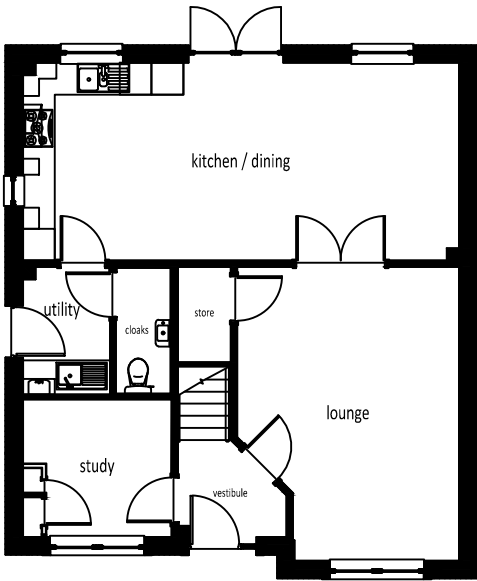


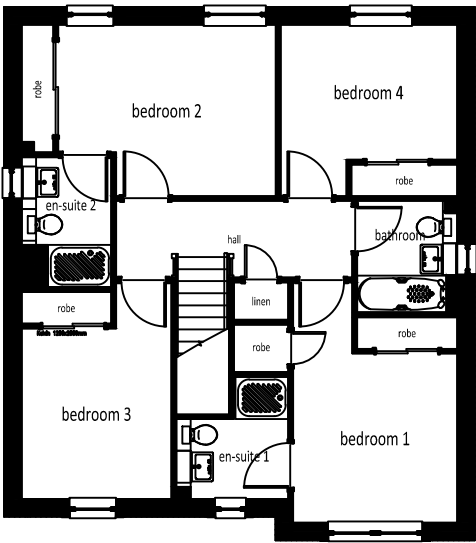
DUNROBIN 20 MK2



FRONT ELEVATION



GROUND FLOOR



FIRST FLOOR

ACCOMMODATION SCHEDULE

LOUNGE	4.19 x 5.55 m	13' 9" x 18' 3"
KITCHEN / DINING	8.23 x 3.74 m	27' 0" x 12' 3"
STUDY	2.80 x 2.60 m	9' 2" x 8' 6"
UTILITY	1.65 x 2.41 m	5' 5" x 7' 11"
CLOAKROOM	1.03 x 2.38 m	3' 5" x 7' 10"
BEDROOM 1	3.10 x 3.20 m	10' 2" x 10' 6"
EN-SUITE 1	2.12 x 2.31 m	6' 11" x 7' 7"
BEDROOM 2	4.11 x 3.24 m	13' 6" x 10' 8"
EN-SUITE 2	1.70 x 2.46 m	5' 7" x 8' 1"
BEDROOM 3	2.83 x 3.22 m	9' 3" x 10' 7"
BEDROOM 4	3.34 x 2.55 m	10' 11" x 8' 4"
BATHROOM	1.89 x 2.11 m	6' 3" x 6' 11"

Muir^{TM®}
HOMES

Drawing No. 1332-081 Revision B Dated 10.03.25

This house type is built in a number of finishes which vary from development to development and plot to plot. Muir Homes maintain a policy of continuous assessment and improvement therefore specifications are subject to modification. Our illustrations have been produced to give you a guide as to appearance and layout. These particulars do not form the basis of any contract.