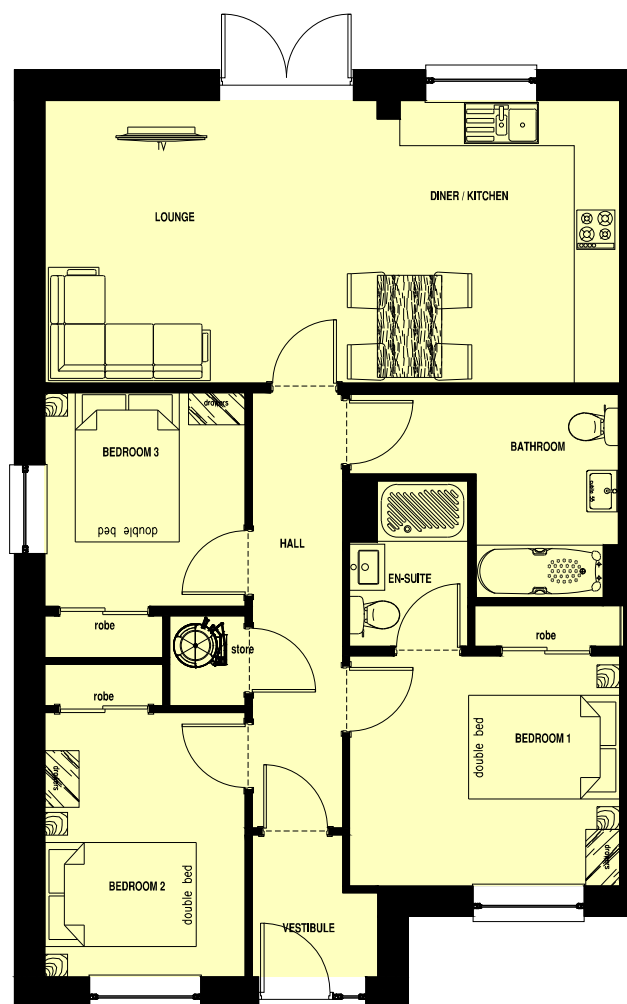


BRODICK 24 (semi)



FRONT ELEVATION



LOUNGE	4.39 x 3.74 m	14' 5" x 12' 3"
DINER / KITCHEN	3.21 x 3.74 m	10' 6" x 12' 3"
BEDROOM 1	3.57 x 3.04 m	11' 9" x 10' 0"
EN-SUITE	1.56 x 2.20 m	5' 2" x 7' 3"
BEDROOM 2	2.65 x 3.50 m	8' 8" x 11' 6"
BEDROOM 3	2.65 x 2.82 m	8' 8" x 9' 3"
BATHROOM	3.56 x 2.69 m	11' 8" x 8' 10"

Muir^{TM®}
HOMES

Drawing No. 1363-090-Bro Revision Dated 05.03.2025

This house type is built in a number of finishes which vary from development to development and plot to plot. Muir Homes maintain a policy of continuous assessment and improvement therefore specifications are subject to modification. Our illustrations have been produced to give you a guide as to appearance and layout. These particulars do not form the basis of any contract.