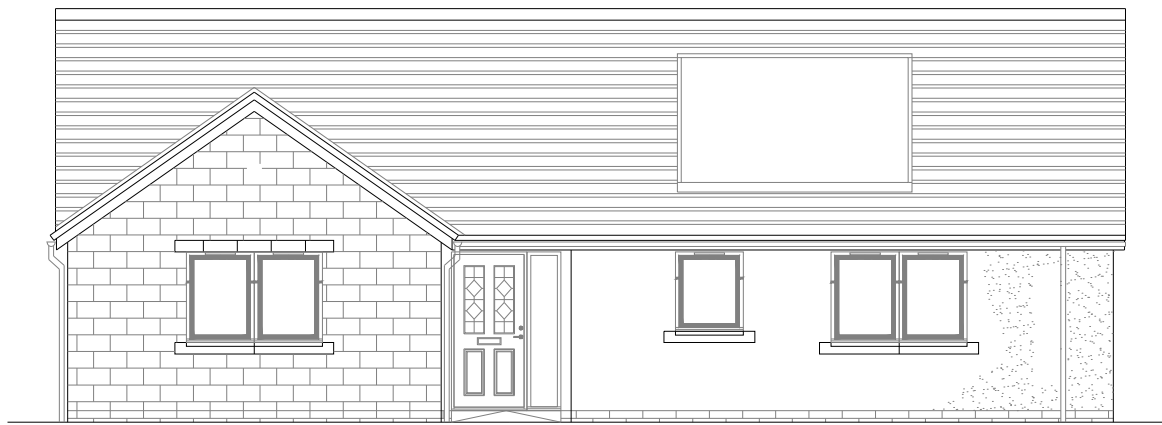


FETTES



FRONT ELEVATION



GROUND FLOOR

LOUNGE	4.51 x 3.83 m	14' 9" x 12' 7"
DINER / KITCHEN	4.13 x 5.14 m	13' 7" x 16' 10"
BEDROOM 1	2.76 x 4.30 m	9' 1" x 14' 1"
BEDROOM 2	3.59 x 2.85 m	11' 9" x 9' 4"
BEDROOM 3	2.71 x 3.07 m	8' 11" x 10' 1"
BATHROOM	2.03 x 2.85 m	6' 8" x 9' 4"
EN-SUITE 1	1.49 x 2.07 m	4' 11" x 6' 10"

Muir^{TM®}
HOMES

Drawing No.38-DB-1072-BroRevision Dated 25/03/25

This house type is built in a number of finishes which vary from development to development and plot to plot. Muir Homes maintain a policy of continuous assessment and improvement therefore specifications are subject to modification. Our illustrations have been produced to give you a guide as to appearance and layout. These particulars do not form the basis of any contract.