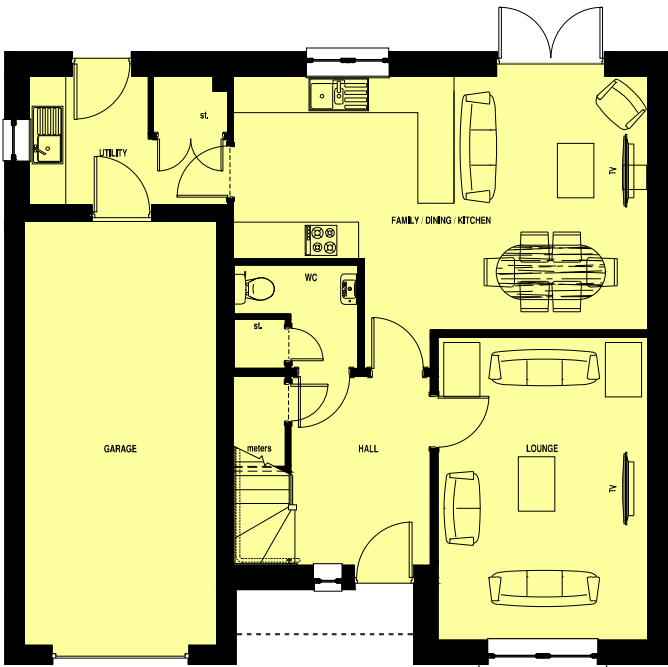


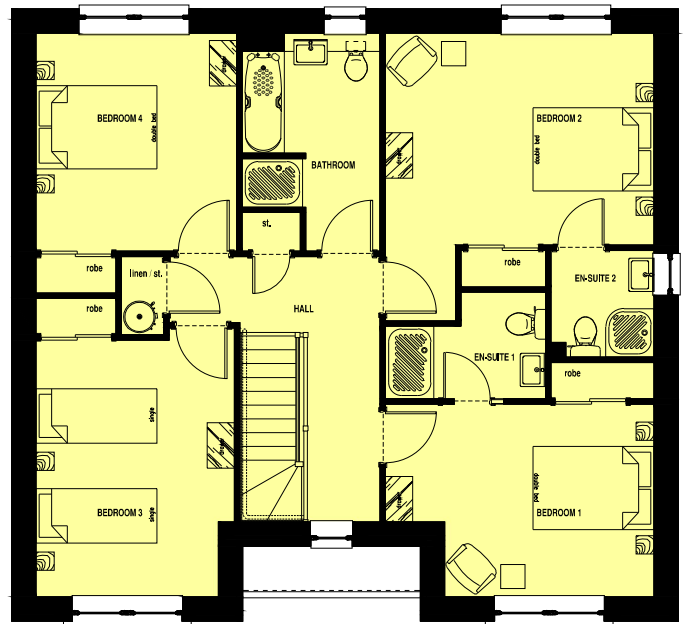
# CRAMMOND



FRONT ELEVATION



GROUND FLOOR



FIRST FLOOR

LOUNGE	3.46 x 5.00 m	11' 4" x 16' 5"
KITCHEN	3.65 x 3.01 m	12' 0" x 9' 10"
FAMILY / DINING	3.19 x 4.19 m	10' 6" x 13' 9"
WC	2.42 x 1.71 m	6' 8" x 5' 7"
BEDROOM 1	3.46 x 3.18 m	11' 4" x 10' 6"
BEDROOM 2	4.44 x 3.50 m	11' 6" x 14' 6"
BEDROOM 3	3.01 x 4.22 m	9' 11" x 13' 10"
BEDROOM 4	3.32 x 3.60 m	10' 11" x 11' 10"
BATHROOM	2.28 x 3.60 m	7' 6" x 11' 10"
EN-SUITE 1	2.65 x 1.76 m	8' 8" x 5' 9"
GARAGE	3.18 x 7.00 m	10' 5" x 23' 0"

**Muir**™  
HOMES

Drawing No.48-D-1692-Bro Revision Dated 26/03/25

This house type is built in a number of finishes which vary from development to development and plot to plot. Muir Homes maintain a policy of continuous assessment and improvement therefore specifications are subject to modification. Our illustrations have been produced to give you a guide as to appearance and layout. These particulars do not form the basis of any contract.